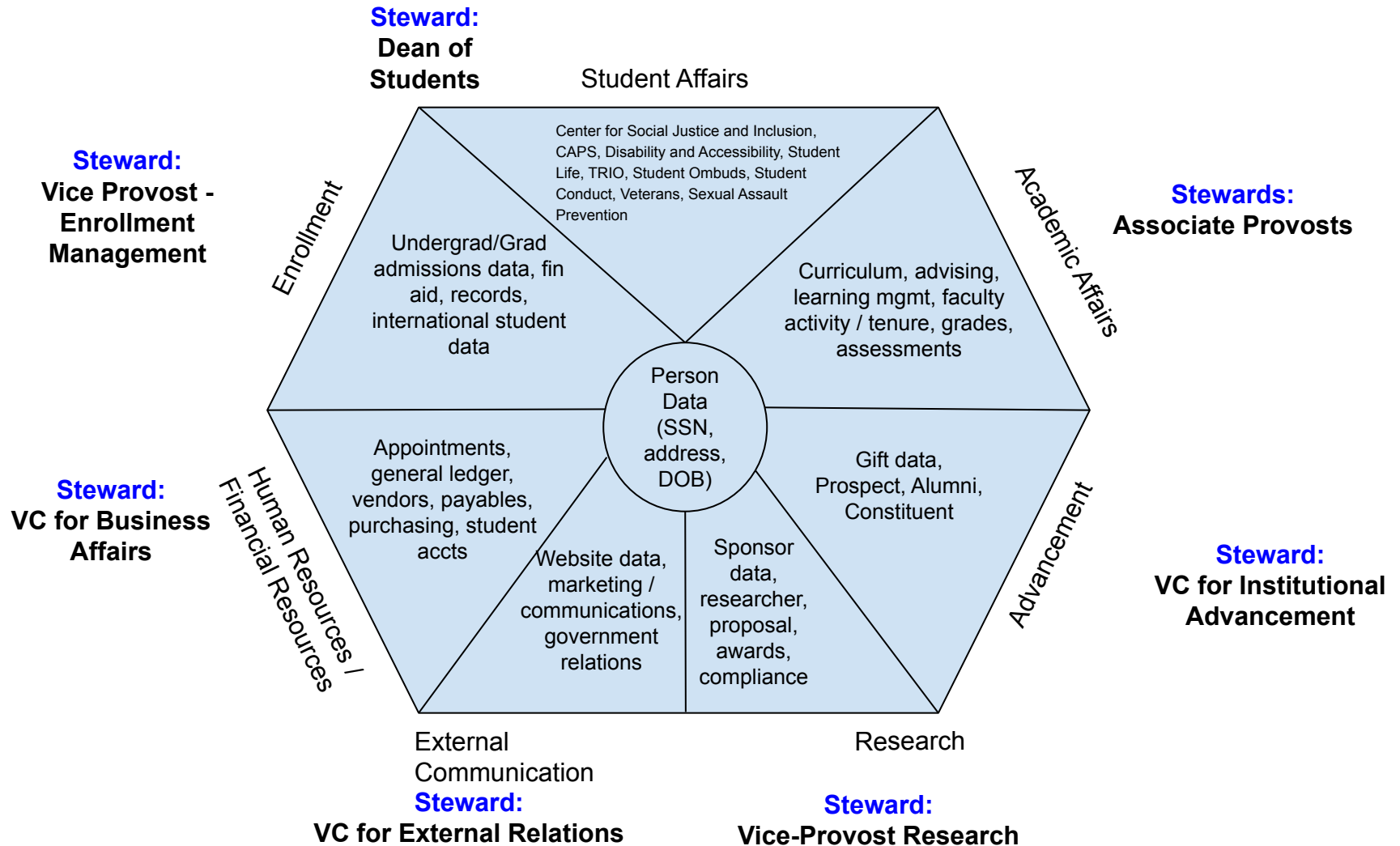


University of Michigan-Dearborn Data Stewardship Structure and Roles - May 2021



- This is intended as a general guide, addressing many key data stores. It is not an exhaustive list of all institutional data.
- This chart includes stewardship responsibilities by Vice Chancellor area. It does not include functions or offices that report directly to the Chancellor.
- Decisions about institutional data will reflect the expertise and responsibility of the Steward, but will reflect the consensus of all stewards.
- Due to the shared nature of person data (circle at the middle of the chart), all Vice Chancellors are responsible for stewarding this data.
- Staff receiving data requests, whether from within or outside the institution, should use this chart to route inquiries to the appropriate steward.